

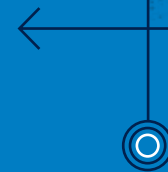
FUTURE MADE
BY HAND

MADE BY HAND

PENNSYLVANIA
COLLEGE OF
TECHNOLOGY



1,000,000+
IDEAS



INTRODUCTION ——— ◇ ○

IF

you made the future by hand, would
it be different from today? Would it be
more thoughtful, imaginative, and intuitive?
Would it work better for more people
throughout the world?

If you put more into today, could you
get more out of tomorrow? If you create
your future at Pennsylvania College of
Technology, the answer is yes.

1,000+

PATHS



FUTURE



TABLE OF CONTENTS

WHY PENN COLLEGE?	2
ACADEMIC PHILOSOPHY	4
ACADEMIC PROGRAMS	6
FEATURED MAJORS	8
ACADEMIC PATHWAYS	16
BIRD'S EYE VIEW	18
ON-CAMPUS LIVING	21
STUDENT LIFE	24
ATHLETICS	30
INDUSTRY PARTNERS	32
MAKER SPOTLIGHT	34
GLOBAL STUDIES	36
ADMISSIONS & AID	37

The Future Needs You

Here, you actually live what you'll become. Right now, today, this moment. That's the approach that has made Penn College unique for more than 100 years. Our tomorrow-minded students know what it takes to build fulfilling, successful lives for themselves—that's why they're here. Not only for the hands-on job experience, but also for the full-on college experience. For getting right down to it, working with companies, learning from experts, and taking the future into their hands.

EXPERIENCE ACQUIRED

At Penn College, you're not just building and sharpening your skills. You're learning alongside faculty already proven in their careers, working with the latest technology, and pushing your boundaries. You're doing the in-demand work that tomorrow needs, the kind that drives the economy, in next generation facilities on top-of-the-line equipment. Across every degree and credential, you're becoming qualified not just to thrive in your industry, but to lead it.



Your Path

- 150+ LEARNING LABS
- 11:1 STUDENT-TO-FACULTY RATIO
- 60+ STUDENT ORGANIZATIONS
- LEADERSHIP DEVELOPMENT PROGRAMS
- INDUSTRY & CORPORATE PARTNERSHIPS
- COMPREHENSIVE FIRST-YEAR PROGRAMMING & RESOURCES
- 3:1 LAB-TO-LECTURE HOURS
- CREDIT FOR RELEVANT LIFE EXPERIENCES
- SEAMLESS ASSOCIATE-TO-BACHELOR-DEGREE PATHWAYS
- NCAA DIVISION III ATHLETICS
- CUTTING-EDGE FACILITIES & EQUIPMENT
- 16-STUDENT AVERAGE CLASS SIZE
- WIDESPREAD INTERNSHIPS, CO-OPS & CLINICALS
- GLOBAL EXPERIENCE OPPORTUNITIES

96% GRADUATE PLACEMENT RATE



TOMORROW IS IN THE MAKING

Begin at the Beginning

In your very first semester, you'll use the same equipment as leaders in your field. Whipping up gourmet cuisine in state-of-the-art commercial kitchens. Perfecting welding skills in the expansive 55,000+-square-foot facility. Growing plants sustainably in our hydroculture garden. You'll be actively immersed in your career and see the impact your work will have on the industries of tomorrow.



TOMORROW IS IN THE MAKING

HERE

you'll use each day as practice for the next.

Working out problems, seeing the results, and tackling them again—until you can solve them in your sleep. Gaining the knowledge and support that make things start happening for you. Like job offers long before graduation, for example. You won't just grow your career. You'll begin it on day one.

PRACTICE MAKES PROFESSIONAL

Go ahead. Pick your profession. Then define it.

Across a diverse lineup of majors, Penn College students are learning to work, solve, and lead in a wide range of fields.

SCHOOL OF BUSINESS, ARTS & SCIENCES

ARTS & SCIENCES

Brewing & Fermentation Science
Emergency Management & Homeland Security
Graphic Design & Art
Human Services & Restorative Justice
Individualized Programs of Study

BUSINESS & HOSPITALITY

Accounting & Business Administration
Baking & Culinary



SCHOOL OF ENGINEERING TECHNOLOGIES

CONSTRUCTION & ARCHITECTURAL TECHNOLOGIES

Architecture & Sustainable Design
Building Construction
Construction Management
Heating, Ventilation & Air Conditioning

DIESEL TECHNOLOGY & NATURAL RESOURCES

Diesel Truck, Heavy Equipment & Power Generation
Forestry
Heavy Equipment Operations
Landscape/Plant Production

INDUSTRIAL & COMPUTER TECHNOLOGIES

Electrical
Electronics & Computer Engineering Technology
Engineering & Industrial Design Technology
Information Technology

MATERIALS SCIENCE & ENGINEERING TECHNOLOGIES

Apprenticeship Technology
Automated Manufacturing & Machining
Civil Engineering & Surveying
Plastics & Polymer Engineering Technology
Welding & Metal Fabrication

TRANSPORTATION

Automotive
Aviation
Collision Repair & Restoration



SCHOOL OF NURSING & HEALTH SCIENCES

HEALTH SCIENCES

Allied Health
Biomedical Sciences
Dental Hygiene
Paramedic & Prehospital Medicine
Physical Therapist Assistant
Radiography
Surgical Technology

NURSING

Practical Nursing, A.A.S.
Nursing, LPN to RN, A.A.S.
Nursing, A.A.S.
Nursing, Part-time, Evening & Weekend, A.A.S.
Nursing, B.S.N.

MASTER'S DEGREES

Nursing Education, M.S.N.
Physician Assistant, M.S.



BACHELOR'S COMPLETION DEGREES

Applied Health Studies
Applied Management
Applied Technology Studies
Automotive Technology Management
Building Automation Engineering
Dental Hygiene
Nursing, RN to B.S.N.
Residential Construction Technology & Management

Completion degrees offer accelerated opportunities for students to complete a bachelor's degree. Many can be completed online.

THOSE WHO CAN, TEACH

Not only are our faculty excellent teachers, but they are also

passionate about working in their fields. They have strong local presence as business owners and industry experts. And, as mentors, they'll use their extensive experience to help you decide which path is right for you. With small class sizes, these professors and instructors get to know you. They are deeply committed to seeing you succeed, at school and after graduation. That's why Penn College classes are never taught by graduate students or teaching assistants, and why our curriculum is constantly updated and fine-tuned to meet the needs of industries.



Landscape/ Plant Production

Ready to open the door to the great outdoors? The associate's

in Landscape/Plant Production allows you to pair your passion for plants with your choice of green careers. Whether you focus on landscaping or prefer plant production, you'll get loads of hands-on experience at the beautiful Schneebeil Earth Science Center. Here's your opportunity to explore the art and science of horticulture while learning how to create a sustainable future for you and our planet.

- ◇ Cultivate real-world experience in our five-acre arboretum
- ◇ Nurture plant production skills in 6,500+ square feet of active greenhouse space
- ◇ Solidify skills and explore career opportunities through an integrated internship
- ◇ Learn how to run your own business by leveling up with the bachelor's in Applied Management

RYAN MONTELEONE '18

Information Assurance & Cyber Security

When he first visited campus, Ryan was instantly drawn in. The labs and the immersive approach had him hooked. He quickly made himself at home, excelled in his courses, and became a Presidential Student Ambassador—a position reserved for our finest students.

“PENN COLLEGE HAS GIVEN ME MUCH MORE THAN JUST A DEGREE; IT HAS GIVEN ME A CAREER. I RECEIVED NOT ONLY A TOP-NOTCH EDUCATION, BUT ALSO ENHANCED MY PROFESSIONAL NETWORK AND SOFT SKILLS SO THAT I CAN CONTINUE TO GROW AS A YOUNG LEADER IN THE CORPORATE WORLD.”

Today he's applying those skills and his degree as a Cyber Security Manager for Pfizer. Ryan leads a team responsible for safeguarding the company's data. He's also spearheading the organization's large-scale data migration—a highly regulated process that he's expediting using cloud solutions.

When you're browsing the 350+ Penn College scholarships, don't forget to look for the one in Ryan's name. He started it himself to support the next generation of IT professionals.



JANELLE BECKER '21

Culinary Arts & Systems

After getting a taste of culinary arts in high school, Janelle knew that cooking was her calling. She came to Penn College and seized every opportunity to perfect her craft. Her team pulled out all the stops to take first place in a fast-paced on-campus live cooking contest. She traveled with a select group of faculty and students to prepare first-class cuisine for elite crowds at the Breeders' Cup and Kentucky Derby. And she gained real-world experience as a cook in our on-campus casual fine dining restaurant. Today Janelle is crafting inventive dishes at Four Twelve Project, a farm-to-table restaurant and winery just outside Pittsburgh in Moon Township.

“THE THING I LOVE MOST ABOUT MY CAREER IS MAKING PEOPLE HAPPY THROUGH FOOD.”



Human Services & Restorative Justice

You want to spark positive change, lift up others, and

build stronger communities for generations to come. The Human Services & Restorative Justice program will arm you with game-changing skills to become a difference maker. You'll be immersed in your field from the first semester, learning tools and techniques, and getting to the heart of how to empathize and empower. This program will inspire you to embrace your can-do spirit. To join forces with like-minded advocates. And to put the wheels of change in motion.

- ◇ Explore a holistic approach that examines the individual, community, and society
- ◇ Practice your skills in a new lab space dedicated to collaboration and hands-on activities
- ◇ Get real-world experience with in-depth community-based practical learning internships
- ◇ Pursue an associate's in two years or seamlessly continue for your bachelor's in four



WORLD OF OPPORTUNITY



Nursing

From the E.R. to the clinic, the operating room to the recovery

room, nurses make a lasting impression. At Penn College, you'll find a lineup of rigorous hands-on programs, dedicated support in small classes, and technology-centric labs outfitted with a family of high-fidelity mannequins that emulate the real thing. Here, you'll learn from expert faculty with real-world experience who are determined to motivate, inspire, and prepare you for one of the most challenging and rewarding career fields.

- ◇ Study abroad and expand your horizons and your skills with programs like the weeklong trip to Guatemala where nursing students work in a volunteer-led medical clinic
- ◇ Join a growing network of 3,800+ nursing graduates pursuing their passion with world-class medical providers
- ◇ Train for success in a program with close to 100% job placement while learning alongside peers who score far above the national and state first-time pass rates on the National Council Licensure Exam (NCLEX)

Nursing Pathways

Pick your path and pursue a career in one of the most rewarding fields.

ASSOCIATE'S

Practical Nursing

Prepare to work as a practical nurse under the direction of a licensed registered nurse, physician, or dentist.

Nursing, LPN to RN

Dive into an accelerated three-semester program that includes Friday and weekend classes.

Nursing

Get the hands-on lab training and clinical experience you need to take your registered nursing exam.

Nursing, Part-time, Evening & Weekend

Earn your associate's and prepare for your registered nursing exam on an extended flexible schedule.

BACHELOR'S

Nursing, B.S.N.

Enjoy extensive hands-on training in preparation for advanced clinical and administrative positions.

Nursing, RN to B.S.N., Completion

Complete 100% online part-time or full-time—an ideal format for working professionals.

MASTER'S

Nursing: Nursing Education Concentration

Advance your career with this 100% online specialized master's program.

Master's in Nursing Education

A career in nursing opens many different doors. And at Penn College,

you'll have lots of options to give back, grow, and advance in the field you love. Whether you dream of making a difference as an LPN, RN, or nurse educator, you'll find a program and faculty just as dedicated to your success as you are. And if you decide to keep the momentum going and earn an advanced degree, your path forward is wide open. It's seamless to progress from an associate's in nursing to a bachelor's or from a bachelor's to the master's.

- ◇ Pursue diverse career opportunities in a variety of settings including academia, hospitals, state and federal agencies, and home healthcare
- ◇ Advance your degree on a part-time basis through online courses with no required campus visits
- ◇ Take advantage of our in-state undergraduate tuition rate, rolling admissions, and free application



TUSHANNA HABALAR

Nursing Faculty

Tushanna Habalar pursued her Nursing degree to serve others, but found her career to be more rewarding than she'd ever imagined. Today, as an educator and registered nurse, she enjoys making a positive impact by improving patient outcomes, inspiring students to succeed, and continually expanding her own knowledge. She loves being part of the Penn College team, creating a fantastic learning experience that leads to amazing student success. In addition to instructing, she supports her students by teaching them to manage their time and to navigate the NCLEX exam with critical thinking skills. Her students look forward to careers filled with opportunity, personal growth, and flexibility.

STEPHANIE SUZADAIL '14

Nursing

Stephanie is no stranger to adversity. A car accident severely challenged her ability to continue her coursework. But she remained determined, leaned on supportive faculty, and put in the extra time to earn her nursing degree. Stephanie thrives in chaos. When the going gets tough, she excels. Today, she's a flight registered nurse for Geisinger Life Flight. Challenges are an everyday reality. And she's overcoming them with ease and confidence. Knowing the value of standing strong against all odds, Stephanie created the FLIGHT (Fearless Learning in Good & Hard Times) Commencement Award and the SOAR (Students Overcoming and Rising) Fund. Both efforts give students the extra boost they need to rise above and seize a brighter tomorrow.



Automotive

Whether you dream of being the master mechanic who

swoops in to save the day or the service manager who leads an all-star team, we've got a program that will take you where you want to go. Since practice makes perfect, you'll spend lots of time in hands-on labs learning the ins and outs of all things automotive. And when you have questions, you'll be completely supported by faculty with real-world experience.

- ♦ Work on real repairs and practice customer support at our on-campus service center
- ♦ Get in-depth hands-on experience in small class sizes with no more than two students per project
- ♦ Dive into the Honda PACT program and take advantage of five paid internships
- ♦ Learn how to run your own shop with a bachelor's in Automotive Technology Management



ANDREW PLACENCIA '20 Automotive

From clubs and charitable pursuits to leadership opportunities and athletics, your college years are the perfect time to explore everything and anything you want. That's what Andrew did.

After spending four years as a full-time soldier, he came to Penn College for a hands-on degree in Automotive Technology. He went all-in, participating in ROTC, joining the College's veteran's fraternity, and working at the on-campus veterans and military resource center. He had so much fun that he decided to stick around for the four-year bachelor's in Automotive Technology Management. All this hard work earned him several awards and the honor of being the student speaker at his commencement.

“ I LIKE HOW THE INSTRUCTORS HAVE A PASSION IN THEIR LINE OF WORK AND THEY SHOW IT BY THE WAY THEY GIVE THEIR LESSONS. THE PROGRAM ALLOWS US TO DIAGNOSE PROBLEMS AS IF IT WERE A REAL-LIFE SITUATION AT A DEALERSHIP. THE INSTRUCTORS WILL GO OUT OF THEIR WAY TO HELP STRUGGLING STUDENTS. ”

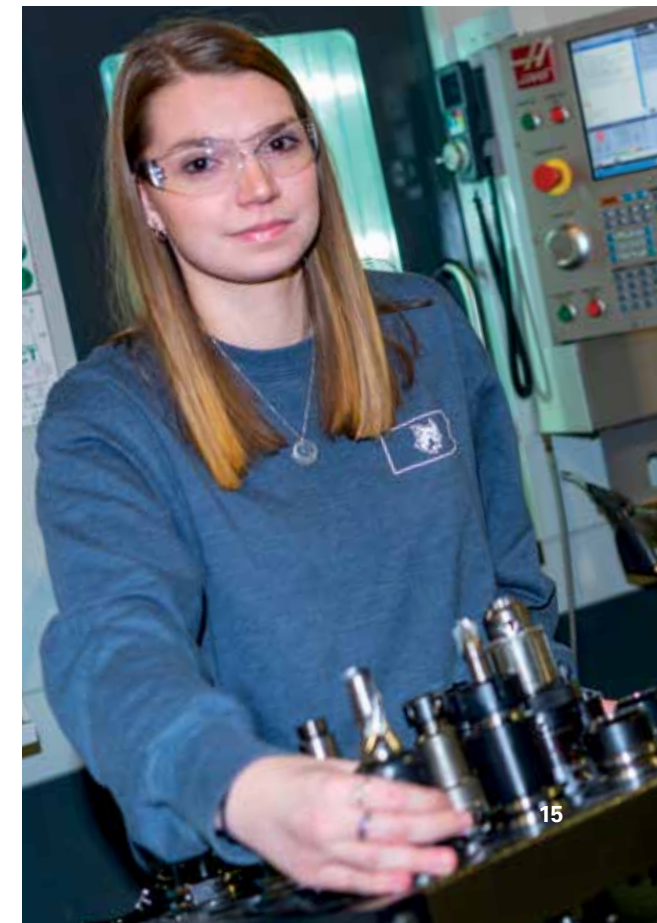


Automated Manufacturing & Machining

In the world of manufacturing, efficiency is everything.

If you can bring an eye for innovation and the standout skills to step-up production, you'll instantly set yourself apart. Pursue an automated manufacturing and machining degree from Penn College and you'll hone the precise skills you need to make an impact on day one. We regularly consult with industry leaders to ensure our programs keep pace with rapid changes in the field. So you're sure to get the training you need to rise to the top of your trade.

- ♦ Learn in a modern lab space outfitted with brand-new, dual-purpose machines so you can master manual and CNC operation
- ♦ Gain in-demand skills to enter a field that's aggressively seeking talent for positions that often go unfilled
- ♦ Choose from multiple industry-driven programs ranging from certificate to bachelor's



GO FOR
TOMORROW

YOUR PATH. YOUR FUTURE.

At Penn College, we believe in keeping your

options open. Whether that's seamlessly transferring from an associate's into a bachelor's or customizing an experience to fuel your future, you'll find the flexibility to blaze your path forward.



LEVEL UP AS YOU GO.

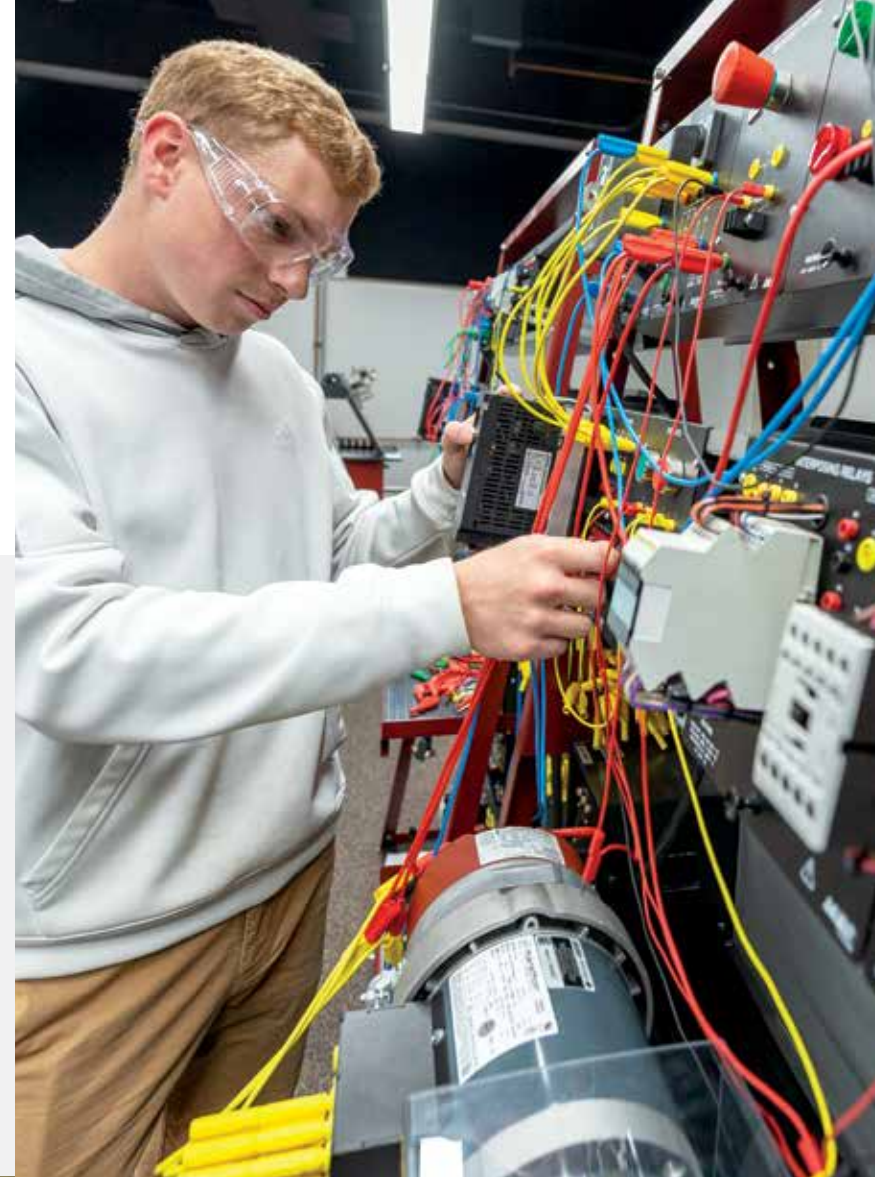
There are lots of perks to getting a bachelor's degree like additional career opportunities and more competitive salaries. But not everyone wants to commit to four years from the start. We get it. And that's why you can always advance as you go.

Immerse yourself in your major. Meet other like-minded makers. Soak in the true hands-on experience. And if you decide to keep going, we'll be there to help you move into a bachelor's that aligns with your goals.



ADD CAREER-DEFINING SKILLS.

Interested in advancing in a technical field? Earn a bachelor's in Applied Technology Studies. Ready for administrative opportunities in healthcare? Check out the Applied Health Studies program. Looking to enter the ranks of leaders? Consider Applied Management.



ENJOY THE FLEXIBILITY TO EXPLORE.

Some majors have several options for specialization, like the bachelor's in **Building Automation Engineering Technology**. In four years, you'll take home an associate's in one of seven areas (electrical construction, electric power generation technology: diesel emphasis, HVAC, IT, mechatronics, or robotics and automation) plus a bachelor's in Building Automation Engineering Technology. With the specific know-how from your first two years and the automation experience from your final two, you'll walk away with exactly the skills employers need and want.

Dive into a degree in **Electronics & Computer Engineering Technology** and you'll build a powerfully marketable combination of skills. An excellent choice for the critical thinker with a mathematical mindset, this path offers lots of routes for customization. You'll have the option to focus on your choice of industry-driven programs ranging from electronics and computer engineering technology to automation engineering technology. When you start with an associate's and decide if you want to pursue an advanced degree, you'll have a clear path to earning your bachelor's.

FIND THE PERFECT PAIRING.

Thinking of studying two related programs? You can do that too. Exploring different areas of interest is an excellent way to personalize your path and craft a standout skill set. If you plan ahead, you can usually make it happen with minimal additional time.

WHAT'S BUILDING AUTOMATION?

It's the ability to centrally manage building systems and automatically control features like room temperature, elevators, and security systems. A degree in Building Automation Engineering Technology prepares you to design, install, and troubleshoot automated systems.



EXPLORE
pct.edu/pathways



A BIRD'S EYE VIEW

There's so much to do on campus, it's hard to narrow it down. Here are a few of our favorites.

1. LEADERSHIP CHALLENGE COURSE: Flex your balance and your teamwork skills on this collaborative course complete with ropes course, tightrope, and tire traverse.

2. SUSQUEHANNA RIVER: Fish nearby rivers and streams or drop in your kayak for a weeknight paddle down the Susquehanna.

3. WILLIAMSPORT WATER AUTHORITY: Unwind on some of the area's most beautiful trails, located just a few minutes from campus.

4. OUTDOOR STUDY NOOKS: Soak up the sun and this week's lessons —just steps away from all the library's resources.

5. CENTER FOR CAREER DESIGN: Stop by for everything from mock interviews to a closet packed with free professional attire.

6. MADIGAN LIBRARY: Meet friends for a coffee at Bookmarks Café or collaborate with classmates in a private study room.

7. DISC GOLF: Challenge your classmates to a game of disc golf. The nine-hole layout starts at the Army ROTC house and ends at the Field House.

8. DAVIE JANE GILMOUR CENTER: Connect with your first-year adviser at the LEAP Center. Financial Aid and Admissions offices are also in this building.

9. FOOD TRUCK: Mark your calendar for Food Truck Fridays. Each month the Wildcat Events Board hosts a fun new restaurant on wheels.

10. THE COLLEGE STORE: Stock up on all your supplies from books and spirit wear to essential tools and equipment.

11. THE FITNESS CENTER: Take a break from class and hit the gym where you'll find everything from treadmills and cardio machines to free weights and a sauna.

12. BUSH CAMPUS CENTER: Stop in for a full schedule of activities like campus bingo, wing night, bible study, and club meetings.

13. THE ROCK: Check out the latest student artwork on our 26-ton always-changing painted rock.

14. DENTAL HYGIENE CLINIC: Take advantage of \$5 student teeth cleanings at our on-campus clinic.

15. FIELD HOUSE: Round up your friends and stop in for Thursday night card tournaments, arrow tag, glow roller skating, and more.

16. UPMC FIELD: Take in a lacrosse or soccer game and cheer on your fellow Wildcats.

17. ROSE STREET COMMONS: Play catch with some friends. Hang your hammock in a tree. Or relax on a blanket with your favorite book.

18. COLLISION REPAIR LAB: Have a fender bender? No problem. Just pay a \$10 shop fee plus the cost of parts and collision repair students will take care of the rest.

19. DR. WELCH WORKSHOP: Collaborate with like-minded creators at the Makerspace where you'll find everything from sewing machines to lathes.

20. CHILDREN'S LEARNING CENTER: Set your little one up for success with on-campus childcare.

21. ARMY ROTC HOUSE: One of the many perks of being an ROTC cadet is access to the ROTC house, located just up the road from the Gilmour Center.

ON-CAMPUS LIVING

Living in the heart of campus is one of the best ways to take in the full college experience. New first-year students live in Rose Street Commons. Complete with a dining hall, convenience store, and fitness center, this six-hall facility has everything you need and lots more. You'll even have a spot to safely store your bike.



Dauphin Hall is one of the six residence halls located in Rose Street Commons, which includes both apartment-style and traditional dorm layouts.

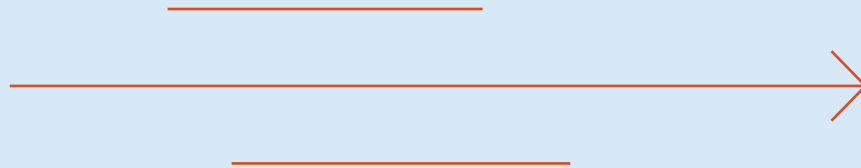
Here,

YOU CAN

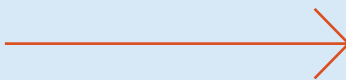
LIVE



With lots of green space, the outside of the Commons is just as welcoming as the inside.



Thanks to suite-style layouts there's plenty of options for hanging out with your roomies.



Hop on the college's network right from your room. Need a quiet space? Head over to one of the hall's nearby study rooms.



WHERE

YOU



The best part of living with a group of students pursuing different paths is how they band together to make Penn College their own. With so many ways to get involved in college life, you'll always be a part of something here. Because the college experience is about so much more than classrooms, lectures, and textbooks. It's about exploring, joining, leading, and recharging, too.



STUDENT PERKS

- Study in Williamsport—home of the Little League® World Series
- Biannual Career Fair hosting nearly 380 employers and 4,000+ jobs and internships
- Dedicated support from counseling services
- The Dr. Welch Workshop: A Makerspace at Penn College
- Major General Fred F. Marty, Veterans and Military Resource Center
- Access to childcare through the Robert & Maureen Dunham Children's Learning Center
- Le Jeune Chef Restaurant discount and etiquette dinners
- Leadership Development
- Student-staffed help desk for IT support
- Resume and business card service
- Career Gear Clothes Closet
- Affordable car service opportunities at the Automotive Labs
- Proximity to PA Wilds and Poconos
- Tickets to Community Arts Center shows
- Free Williamsport area bus service
- Access to Susquehanna River Walk and Ridge Trail

SUPPORT

When it comes to perks at Penn College, the LEAP Center tops the list. All first-year and transfer students have access to a full lineup of services designed to help you learn, evolve, adapt, and prepare for an amazing tomorrow. Leading the charge is your LEAP adviser who will serve as your mentor and resource for all things Penn College.

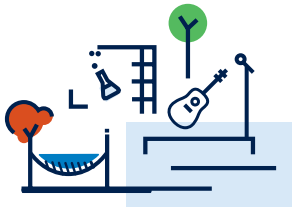
LEAP
CENTER
THE SPRINGBOARD
FOR NEW STUDENTS



As a student, you can get insight from the field by partnering with an alumnus through our mentoring program. You can also tap into alumni networks here in Williamsport and in the nearby metropolitan areas of Philadelphia, New York City, Pittsburgh, and Washington D.C., to take advantage of internships and job opportunities.



EXPLORE
pct.edu/careerdesign



INVOLVEMENT

Our students are always ready to try something new or get better at what they do. Our 60+ clubs and organizations help them do just that. Develop leadership skills as a mentor or tutor, participate in student government, join Greek life, or sit on the Wildcat Events Board. There are lots of opportunities to flex your skills and network via professional organizations, societies, and associations.

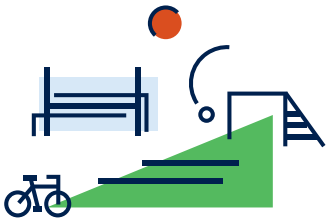


COMMUNITY

Whether you choose to live in one of our apartment-style residence halls, commute, or reside just off campus on Millionaire's Row, you'll enjoy being part of a strong campus culture with access to all clubs and campus services. No matter where you choose to reside, you'll experience the benefits of campus life.



Want to bring your car? No problem. Parking spaces are for first-year students, too.



ENGAGEMENT

When you want a break from your studies, all you have to do is step outside your door. Challenge your friends to a game of pool, cheer on the Wildcats at a game, try out our student-run restaurant, Le Jeune Chef, or head to the BBQ grills after class for a low-key get-together. Attend a comedy show, concert, or lecture in the evening. Or get on the stage yourself, during an open mic night. Events and activities are everywhere you look.





Penn College is nestled within historic Williamsport, near the Victorian mansions of Millionaire's Row built by the lumber barons of the 1800s. We're next door to some of Pennsylvania's most beautiful State Parks, forests, and Class A Wild Trout Streams. Just a short walk from the natural beauty of the Susquehanna River, main campus sits at the base of Bald Eagle Mountain. Hit the hiking trails, campgrounds, and mountain biking routes for scenic views and outdoor activities. Downtown Williamsport is lively with art galleries, restaurants, breweries, and cafes, not to mention one of the East Coast's finest performance venues, the Community Arts Center.

EXPLORATION

STUDENT TRADITIONS

Wildcat Weekend
Welcome Weekend
Homecoming Bonfire
Pre-finals Midnight Breakfast
Battle of the Lumber Soccer Games
Wildcat Madness Basketball Kickoff
Little League® World Series
MLK Day of Service

WILLIAMSPORT WATER AUTHORITY

Just minutes from campus are miles of trails with endless opportunities to cut loose for a run or take it slow and soak in the sights and sounds of nature.

SUSQUEHANNA RIVER WALK

Located less than a mile from campus, this scenic paved pathway borders the river and is about a three-mile loop from campus.

COMMUNITY ARTS CENTER

The 2,000-plus-seat Community Arts Center located in downtown Williamsport offers everything from Broadway-style productions and comedy acts to live musical performances.



EXPLORE
pct.edu/noboundaries



60+ STUDENT ORGANIZATIONS

Student Government Association
Black Student Union
Greek Senate
One World Club
Penn College Alliance
Penn College Benefitting THON
Pep Band
Wildcat Events Board
American Welding Society
Baja SAE
Construction Management Association
SkillsUSA
Society of Plastics Engineers
Student American Dental Hygienists' Association
Student Nurses' Association
Student Wildcats of Robotic Design
Wildcat Online Gaming Association



EXPLORE
pct.edu/studentorgs



12 TOP-10 FINISHES

5 MILES OF TEST TRACK

311-POUND CAR

47 MPH MAX SPEED

15+ TEAM MEMBERS

100% DEDICATED CLUB SPACE

2 FIRST-PLACE FINISHES

17 YEARS OF COMPETITION

ON BY NATURE
HANDS-ON

At Penn College, you'll meet a community of creators.

Some enjoy fixing cars and others dream of designing bridges. Regardless of the passion they're pursuing, they crave their craft. That's why you'll have lots of time to see concepts come to life in lab and take your interests to the next level outside of class. Because we understand that you are hands-on by nature. It's how you learn. How you explore. And how you live. This is the maker mindset. It's part of every program and it's the cornerstone of our culture.

DRIVEN TO SUCCEED

Each year, the Penn College Baja team draws talent from across the college to create a high-performance car. No, this isn't a class assignment. It's a labor of love. Countless hours designing the perfect vehicle. Loads of lab time engineering the highest performing parts. Hundreds of runs around the rugged test track. It's not easy. But it's totally worth it when they nail hairpin turns and see the dirt fly as they blaze past the competition.

THE MISSION

To design and build a high-performance single-seat all-terrain vehicle that will outperform teams from top engineering colleges.

THE TEAM

A talented collection of students from various majors working together to achieve the best possible combination of durability and speed.

THE CHALLENGE

Create a vehicle that tops the competition in acceleration, suspension, maneuverability, and endurance.

THE RESULTS

The 2022 Baja crew made team history with legendary back-to-back first-place finishes in the coveted endurance competition.



EXPLORE
pct.edu/bajasae





ATHLETICS



STAY WILD

At Penn College, we are all Wildcats.

We're ferocious, scrappy, resourceful, and ready—on the field and off. As an **NCAA Division III** school, we're all about getting right into the action. We arrive prepared, practiced, and primed to pounce at every opportunity. From the intercollegiate level to club sports & intramurals, we drive forward toward what's next, with hard work, passion, and determination. We know expertise comes from putting our minds and bodies to work, with creating a better future as our goal. That's the Wildcat way.

You've heard of a pod of whales, a herd of sheep, and a pack of dogs. But what about a group of wildcats? Together, we're known as a "destruction." Seriously, look it up! Join us in the Penn College student fan section—The Destruction Zone—to cheer on your fellow Wildcats.

WOMEN'S SPORTS

- Archery
- Basketball
- Cross Country
- Esports
- Soccer
- Softball
- Tennis
- Volleyball

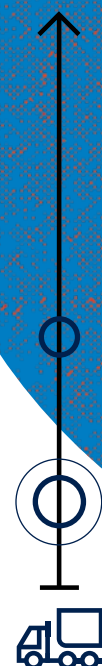
MEN'S SPORTS

- Archery
- Baseball
- Basketball
- Cross Country
- Esports
- Golf
- Lacrosse
- Soccer
- Tennis
- Wrestling

Work with experts to become an expert

Penn College's strong corporate

partnerships impact every step of your journey—from your first day in the classrooms and labs, to career placement (oftentimes, well before graduation) and beyond.



OUR CORPORATE PARTNERS

Pfizer, B. Braun Medical, West Pharmaceutical Services
UPMC, Geisinger
The Hershey Company, Ball Corp.
Lockheed Martin, GE, Cummins
Honda, Ford, Fiat, Chrysler, Tesla, Nationwide
PennDOT, DEP, DCNR
FedEx, UPS
John Deere, Komatsu, Caterpillar, Volvo Construction Equipment
Johnson Controls, Siemens
Miller Electric, Fronius USA, Hypertherm
Levy Restaurants, Wolfgang Puck
Whiting-Turner, Toll Brothers, Larson Design Group, Allan Myers
Lycoming Engines, Piedmont Airlines
Wegmans Food Markets
National Security Agency
Corning Inc., Shell Polymers, SEKISUI KYDEX
Pacproinc, Haas Automation, Acero Precision



EXPLORE
pct.edu/corporate



How do our corporate partnerships directly benefit Penn College students?



EDUCATION AND EQUIPMENT

From precision healthcare to plastics, our partners are as hands-on as our students, helping Penn College bring education extra edge. Through these partnerships, students have access to a robust collection of foundational and state-of-the-art industry equipment.



EMPLOYMENT OPPORTUNITIES

Experience is the best teacher. Our corporate partners hire our graduates for their ability to jump right in and advance quickly.



INNOVATIVE PROGRAMMING

Future-readiness is a joint project between educators and industry partners. Together, we design innovative programs that plug students in.



SCHOLARSHIPS AND AWARDS

Our corporate partners bolster student opportunities through scholarships and sponsorships, and help us attract outstanding professors with faculty awards.

Penn College × Caterpillar:

AN INDESTRUCTIBLE PARTNERSHIP

Take a stroll through the 125-acre heavy-equipment operations site near the Herman T. Schneebeli Earth Science Center campus, and you'll notice our students honing their skills on industry-standard Caterpillar equipment. That's because our corporate partners at Caterpillar Inc. helped us implement a CAT-specific degree. They donated the equipment. They continue to offer instructor training. And they deliver generous scholarships, sponsorships, and opportunities for student internships. As a result, they tend to hire our graduates for well-paying positions. Why wouldn't they? Our students are true assets.



MAKE



When Penn College welding faculty and students were called on to create the structural framework for an open-air installation to be placed in the Vatican, they answered in a big way.

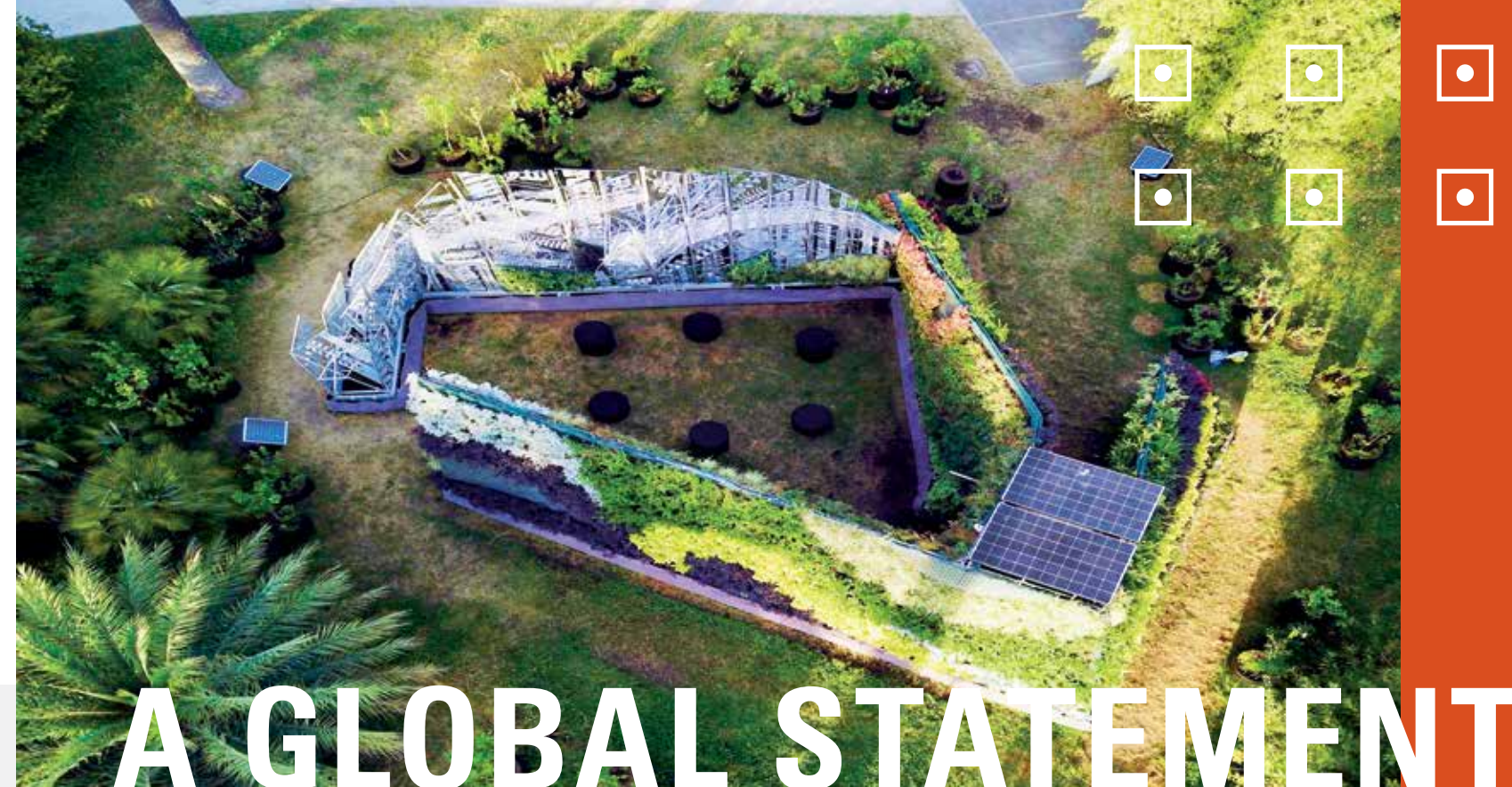
Visionary Julian Revie had one goal. To create an artistic masterpiece that would unite humanity and nature.

And the result was the Living Chapel, an outdoor sanctuary that integrates renewable energy sources, recycled materials, living plants, and sustainable water resources.

Gilleen Denny, Penn State alumna and chief architectural designer for the project, was charged with bringing Revie's vision to life. She leaned on the expertise of the welding team at Penn College to fabricate the dynamic walls for the Chapel.

Nine instructors and 15 students spent 10 weeks fabricating the structural framework. And it wasn't an easy task. The crew worked a feverish 3,500+ hours and used nearly 5,000 feet of aluminum—about 16 football fields in length—to build the four walls.

But when it was all said and done, the Wildcats involved will tell you it was well worth the experience of a lifetime.



A GLOBAL STATEMENT

Some of the structure is covered in evergreen leaves and flowers while a huge angular section is comprised of recycled metal. Suspended cross cutouts chime in the wind. A solar-powered irrigation system waters the plants. And as the water flows through the system, it makes natural music by causing mallets to hit drums.



EXPLORE
pct.edu/living-chapel



THE WORLD

VIA

WILLIAMSPORT

Focusing on a career can also mean expanding your horizons. Studying abroad brings you firsthand knowledge of how your industry works on a global scale, not to mention it's an amazing way to experience more of the world and the people in it. And with financial support, it's easier than you might think.

On the home front, our student support offices help international students with every aspect of their education. From application to graduation, assistance is always available.



**GLOBAL
EXPERIENCE
COURSES**
+ ○ +

Alaska
Dominican Republic
France
Guatemala
Italy
Mexico
Peru
Scandinavia
Spain
United Kingdom

The Future Invested

STUDENTS FIRST

At Penn College, we believe hands-on education should

be within reach for all eligible students. That's why our admissions process is simple. There's no need for national tests or essays. As long as you submit transcripts, you're in. And thanks to rolling admissions, you'll receive your admissions decision sooner.

We'll also pair you with a personal admissions counselor who will guide you through the process and answer any questions along the way.

Our academic programs are designed around our students. In order to provide the best preparation, sometimes that means additional requirements for specific majors or selective admissions processes. Hop on our website to see if this applies to you.

LIGHTENING THE LOAD

Here, you'll benefit from investing in your education right away, and continue to see that investment multiply after graduation. We work with students and their families to facilitate the admissions process and strive to make education possible through financial aid and scholarships.



LEARN MORE AND APPLY
pct.edu/admissions

More than \$2.3 million in Penn College Scholarships awarded in 2021-22

DEADLINES

FALL SEMESTER		DEADLINE
FEB 1	Admissions application	priority
MAR 1	FAFSA	priority
	Scholarship application	priority
MAY 1	International application	final
JUL 1	Admissions application	recommended
AUG 1	Transfer application	recommended
SPRING SEMESTER		DEADLINE
OCT 1	Admissions application	priority
	International application	final
	Scholarship application	priority
DEC 1	Admissions application	recommended
JAN 1	Transfer application	recommended

THE PENN COLLEGE EXPERIENCES



→ DOING
LEADING
LEARNING
EXPLORING
TINKERING
TEACHING
LIVING
BUILDING
CHANGING
INNOVATING ←

To get more out of the future, we put more into it. We build it each day by facing the challenges, head-on and hands-on, that build our knowledge, skills, and perspective. By taking on today with everything we have and all that we are, we become what tomorrow needs.

96%

GRADUATE PLACEMENT RATE

Apply now at pct.edu/apply



PENNSYLVANIA COLLEGE OF TECHNOLOGY

ADMISSIONS OFFICE

Davie Jane Gilmour Center, Room 1068
Pennsylvania College of Technology
One College Avenue
Williamsport, PA 17701-5799 USA

admissions@pct.edu
+1.800.367.9222 or +1.570.327.4761
@penncollege



 **Pennsylvania
College of Technology**
A Penn State Affiliate

Pennsylvania College of Technology is an accredited institution and a member of the Middle States Commission on Higher Education (MSCHE). Pennsylvania College of Technology's accreditation status is Accreditation Reaffirmed. The Commission's most recent action on the institution's accreditation status on June 23, 2022, was to reaffirm accreditation.

The Middle States Commission on Higher Education is an institutional accrediting agency recognized by the U.S. Secretary of Education and the Council for Higher Education Accreditation.

Penn College operates on a nondiscriminatory basis.

All data from 2021-22 sources.

pct.edu/apply