



**Pennsylvania
College of Technology**
A Penn State Affiliate



FUTURE MADE BY HAND



FUTURE MADE
BY HAND



PENN COLLEGE 2024
U.S. NEWS &
WORLD REPORT
BEST COLLEGES
REGIONAL COLLEGES-NORTH
RANKINGS

#1
MOST INNOVATIVE SCHOOLS

#2
BEST UNDERGRADUATE TEACHING (TIE)

#4
TOP PUBLIC SCHOOLS

#6
REGIONAL COLLEGES NORTH

These rankings represent the quality education and academic excellence you can expect when you enroll.



Pennsylvania College of Technology, a special mission affiliate of Penn State, is the home of hands-on learning for in-demand careers. Across a diverse lineup of majors from master's and bachelor's to associate degrees and certificates, our tomorrow makers are training to transform their futures—and the industries they go on to lead. Whether it's in nursing or welding, culinary or IT, students are building the skills and confidence to make a difference on day one. They're also enjoying the full college experience thanks to on-campus leadership opportunities, a calendar of engaging events, 60+ student clubs and organizations, and NCAA Division III athletics. With so many pathways to explore, career-driven support, and a 96% graduate placement rate, the future is here.

YOUR HOME AWAY FROM HOME

CHOOSING WHERE TO CONTINUE YOUR EDUCATION

can be daunting—even more so when considering whether to enroll in a college or university in another country.



At Pennsylvania College of Technology, we welcome international students and the vital contributions they make to our learning environment—as well as to campus life and culture. If you choose to join our inclusive community of tomorrow makers, we pledge to make your transition as seamless as possible.

We integrate a global perspective into our Penn College curriculum and academics, a stance enhanced by the relationships we share with our worldwide industry partners, who help shape the classroom and lab experiences offered to all of our students. At Penn College, you will embrace hands-on learning as you work alongside diverse faculty with a wealth of real-world experience. And you will acquire job-ready skills in industry-driven, specialized labs with the latest equipment and technologies.

We are committed to your success, and so we offer an array of support services to help you navigate your college and career paths. Our safe, welcoming, student-centered environment is an advantage to all learners.

I am confident that Penn College can become your home away from home, and that you will quickly become part of our Wildcat family of students, alumni, faculty, and staff.

Best wishes,

Dr. Michael J. Reed
President



HAMIN KIM
Aviation Maintenance Technology



Before coming to study at Penn College, Hamin served in the Republic of Korea Army for two years as a heavy-equipment inspector. This experience sparked an interest in aviation and propelled him to consider furthering his education in the United States.

After visiting Penn College and seeing hands-on learning in action, he was hooked. Hamin lived on campus, connected with students in various majors, joined clubs, and seized internship opportunities to round out his resume.

"I remember rebuilding an engine for the first time and calling out 'Clear propeller!' so everyone stood back as we tested our work," he said. Sure enough, it started up and the hum was heard throughout the lab. Today Hamin is applying these skills in an exciting career as an aviation mechanic for Fly Advanced in Lititz, PA.

FACTS & FIGURES

LEARNING LABS

150+

GRADUATE PLACEMENT RATE

97.7%

AVERAGE CLASS SIZE

16

EMPLOYERS RECRUITING ON CAMPUS

630

STUDENT BODY

4.2k

ALUMNI WORLDWIDE

62k



Division III

YOUR FUTURE IS IN REACH



COLLEGE IS AN OPPORTUNITY TO EXPAND YOUR HORIZONS.

It's a time to perfect your craft, explore fresh perspectives, and make connections that will last decades.

And because we welcome students from down the road and around the globe, you're sure to find someone who shares your interests and another who will introduce you to something completely new.

At Penn College, we celebrate diversity and believe that differences are an invitation to ask questions. Because the more we can learn, the better prepared we'll be to transform tomorrow.

KELIN PATEL
Nursing

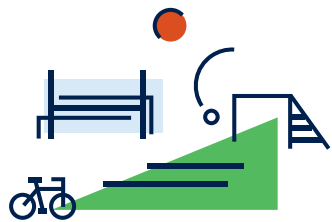


Like many students in her high school, Kelin was excited to attend college in the United States. She dreamed of a career in healthcare and was drawn to American culture. She learned about Penn College from her brother who lives in Central Pennsylvania. "He heard lots of great feedback from his friends," she said.

Moving from Sidhpur, India has been an adjustment, but with the help of her brother and supportive faculty and staff, Kelin is settling into her new home-away-from-home. Now in her fifth semester, she is embracing her new community and enjoying the freedom of having her U.S. driver's license.



Williamsport’s scenic location in beautiful Central Pennsylvania opens the door to all types of outdoor adventure. Whether it’s walking from campus to the Susquehanna Riverwalk, hiking in nearby state forestlands, or kayaking and fishing in local waterways, there are plenty of ways to enjoy the natural beauty of the region. Those who wish to explore nearby cities can travel to New York, Philadelphia, Pittsburgh, Baltimore, and Washington, D.C., all within a three-hour drive.



MAKE CONNECTIONS

Thanks to small class sizes, it’s easy to connect with classmates and instructors at Penn College. Instead of large lecture halls, you’ll enjoy lab-based learning where you’ll get to know students in and out your program. And to kick things off, we host PC3—three solid weeks of activities in the beginning of the semester. Put yourself out there and join us for as many events as possible.



MEET YOUR COMMUNITY

Williamsport hosts the Little League Baseball® World Series, an international event in August. Check out the parade. Enjoy the festivities. And visit downtown galleries, restaurants, and shops.



THRIVE ACADEMICALLY

- While you will develop new relationships, interests, and connections, your most important goals will be to graduate and move on to a great career. We provide multiple free resources to help you reach these goals:
- ◇ Michael J. Hudock, Sr. Center for Academic Excellence
 - ◇ Academic advisors
 - ◇ Tutors
 - ◇ Study skills specialists
 - ◇ Peer Mentors
 - ◇ Study groups
 - ◇ Counselors
 - ◇ Center for Career Design

GET INVOLVED

With so many ways to get involved in college life, you’ll always be a part of something here. Because the college experience is about so much more than classrooms, lectures, and textbooks. It’s about exploring, joining, leading, and recharging, too. Link up with like-minded leaders in your choice of 60+ student organizations and clubs. Challenge your athletic skills in a variety of NCAA Division III sports. Or keep it casual with intramural sports.



STUDENT ORGANIZATIONS

60+



ON-CAMPUS DINING OPTIONS

9



ON-CAMPUS RESIDENCE HALLS

8



KEEP EXPLORING

Take advantage of an ever-expanding roster of global experiences. Recent programs include Global Food & Hospitality in Italy, European Sustainable Building, Historical Architecture and Art in Spain, International Automotive Studies in France and Italy, and Adventure Anthropology worldwide.



PICK YOUR
PROFESSION
THEN DEFINE IT



EMBRACE
YOUR NEW
COMMUNITY



Finding a college you can call home is essential. Here's an idea of what you can expect from your Penn College experience.

MISSION

Inspiring and preparing Tomorrow Makers—the next generation of industry leaders—with real-world experience and innovative spirit.

VISION

To cultivate a diverse community of innovators and creators determined to shape a better tomorrow.

VALUES

STRENGTH THROUGH RESPECT

We celebrate our differences, foster a culture of belonging, and recognize that mutual respect is the foundation of our learning community.

REAL-WORLD EDUCATION

Through a variety of learning experiences, students benefit from a purposeful, workforce-driven education that blends theoretical principles with hands-on applications.

STUDENT-CENTERED ENVIRONMENT

Students are thoughtfully immersed in experiences that invite exploration of diverse subjects and perspectives, promote critical thinking, and ignite lifelong learning.

BUSINESS AND INDUSTRY PARTNERSHIPS

Coursework, experiences, and skill sets are intentionally designed to mutually benefit and maximize opportunities for students and their employers.

SCHOOL OF NURSING &
HEALTH SCIENCES

HEALTH SCIENCES

- Allied Health
- Biomedical & Prehospital
- Dental Hygiene
- Physical Therapist Assistant
- Radiography
- Surgical Technology

NURSING

- Nursing, LPN to RN, A.A.S.
- Nursing, A.A.S.
- Nursing, B.S.N.

MASTER'S DEGREES

- Physician Assistant, M.S.

SCHOOL OF ENGINEERING
TECHNOLOGIES

CONSTRUCTION &
ARCHITECTURE

- Architecture & Sustainable Design
- Building Construction
- Construction Management
- Heating, Ventilation & Air Conditioning

DIESEL TECHNOLOGY &
NATURAL RESOURCES

- Diesel Truck, Heavy Equipment & Power Generation
- Forestry
- Heavy Equipment Operations
- Landscape/Plant Production

INDUSTRIAL & COMPUTER
TECHNOLOGIES

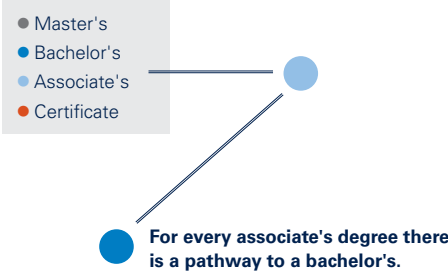
- Electrical
- Electronics & Computer Engineering Technology
- Engineering & Industrial Design Technology
- Information Technology

MATERIALS SCIENCE &
ENGINEERING TECHNOLOGIES

- Automated Manufacturing & Machining
- Civil Engineering
- Non-Destructive Testing
- Polymer Engineering
- Welding & Metal Fabrication

TRANSPORTATION

- Automotive
- Aviation
- Collision Repair & Restoration



EXPLORE THE
POSSIBILITIES
pct.edu/pathways

SCHOOL OF BUSINESS,
ARTS & SCIENCES

ARTS & SCIENCES

- Brewing & Fermentation Science
- Emergency Management & Homeland Security
- Graphic Design & Art
- Human Services & Restorative Justice
- Individualized Programs of Study

BUSINESS & HOSPITALITY

- Accounting & Business Administration
- Baking & Culinary

BACHELOR'S COMPLETION
DEGREES

- Applied Management
- Applied Technology Studies
- Automotive Technology Management
- Building Automation Engineering
- Residential Construction Technology & Management

Bachelor's completion degrees offer accelerated opportunities for students to complete a bachelor's degree.



EXPLORE ALL
PROGRAMS
pct.edu/programs



GLOBAL OPPORTUNITIES

Penn College students start influential careers at many of the top global companies in their industries. Here's a sample of where they're working.



Admissions & Costs

APPLICATION CHECKLIST

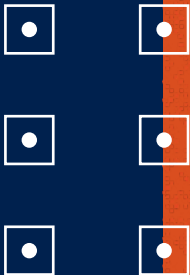
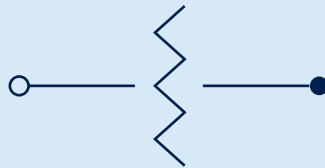
- Complete the online application: pct.edu/international
- Submit supporting documentation:
 - Official secondary school transcripts*
 - Official college transcript(s) (if applicable)*
 - * International transcripts must be submitted through an approved evaluation service. Reference naces.org/members to find an approved service.
 - Proof of English language proficiency
 - Financial guarantee information
 - Copy of your passport
- Meet Penn College placement requirements.

TUITION & FEES (2024-25)

The total estimated cost for one academic year is \$41,260 USD. International applicants are eligible to apply for Penn College Scholarships through our online scholarship application: pct.edu/scholarships.

After Acceptance Process

- Receive your Form I-20.
- Schedule an appointment with the US Embassy for a visa interview.
- Pay the SEVIS I-901 fee of 350 USD through the Department of Homeland Security.
- Attend visa interview. Be sure to bring your I-20, letter of acceptance, proof of I-901 fee payment, and financial information.
- Receive your F-1 student visa.
- Make travel arrangements to arrive at Penn College.



LET'S MAKE TOMORROW TOGETHER

Connect with our team today.



ADMISSIONS OFFICE

Davie Jane Gilmour Center, Room 1068
Pennsylvania College of Technology
One College Avenue
Williamsport, PA 17701-5799 USA

admissions@pct.edu
+1.800.367.9222 or +1.570.327.4761
[@penncollege](https://www.penncollege.edu)



TAKE A VIRTUAL TOUR TODAY
pct.edu/v-tour



TOMORROW IS IN THE MAKING

ADMISSIONS OFFICE

Davie Jane Gilmour Center, Room 1068
Pennsylvania College of Technology
One College Avenue
Williamsport, PA 17701-5799 USA

admissions@pct.edu
+1.800.367.9222 or +1.570.327.4761
@penncollege



**Pennsylvania
College of Technology**
A Penn State Affiliate

Pennsylvania College of Technology is an accredited institution and a member of the Middle States Commission on Higher Education (MSCHE or the Commission) www.msche.org. Pennsylvania College of Technology's accreditation status is Accreditation Reaffirmed. The Commission's most recent action on the institution's accreditation status on June 23, 2022, was to reaffirm accreditation.

MSCHE is recognized by the U.S. Secretary of Education to conduct accreditation and pre-accreditation (candidate status) activities for institutions of higher education including distance, correspondence education, and direct assessment programs offered at those institutions. The Commission's geographic area of accrediting activities is throughout the United States.

Penn College operates on a nondiscriminatory basis.

All data from 2023–24 sources.

pct.edu/apply