



**Pennsylvania  
College of Technology**

A Penn State Affiliate

# MAKE YOUR MOVE

**YOUR GUIDE TO  
TRANSFER SUCCESS**



# LET THE JOURNEY BEGIN

Penn College welcomes hundreds

of transfer students each year. No matter where you started your coursework or when you're planning to transfer—fall or spring—we're dedicated to helping you make a smooth transition.



Transferring is a big decision that often comes with lots of concerns. We hope this guide lends some insight as you consider your options. And, of course, we're here to answer any questions along the way.



“ GROWING UP, COLLEGE WASN'T SOMETHING THAT RESONATED WITH ME. MY PARENTS, HAVING ACQUIRED FOUR-YEAR DEGREES THEMSELVES, WEREN'T FOND OF THE IDEA OF ME NOT GOING TO COLLEGE. SO, I ATTENDED A UNIVERSITY FOR ONE SEMESTER. AFTER THAT ONE SEMESTER, I REALIZED THAT THE TYPICAL CLASSROOM SETTING WASN'T THE RIGHT FIT FOR ME. I KNEW THERE HAD TO BE A BETTER OPTION OUT THERE. AND THAT'S WHEN I STUMBLED UPON PENN COLLEGE! ”



MEET  
JASON

JASON WIEDL  
Construction Management



# MAXIMIZING YOUR CREDITS



## CREDIT TRANSFERS

You've worked hard to earn your credits. We celebrate that. Courses taken at another institutionally accredited college or university are eligible for transfer as long as they're comparable to courses offered at Penn College, are completed with a grade 'C' or higher, and are applicable to your intended major.

Alternative credit options—credit by exam and credit for work/life experience—allow for additional opportunities to earn credit in areas of expertise when transfer credit isn't available.

## CURIOUS WHICH CREDITS WILL TRANSFER?

Check out the transfer course equivalency search tool at [pct.edu/crosswalk](https://pct.edu/crosswalk). Simply add courses you've taken at another institution and we'll show you in real-time if they match up to ours.

## NEED HELP?

We offer unofficial transfer credit evaluations. Request yours today by sending your transcript to [admissions@pct.edu](mailto:admissions@pct.edu). Once you're accepted, you will receive your official transfer credit evaluation from the Registrar's Office.



*" I FEEL LIKE I'VE FOUND MY HOME AT PENN COLLEGE. I FEEL VERY WELCOMED AND UNDERSTOOD AND ACCEPTED FOR WHO I AM. THE FACULTY ARE ABSOLUTELY WONDERFUL. THEY ARE EXTREMELY WILLING TO WORK WITH ME AND ALWAYS AVAILABLE TO LEND AN EAR. WHEN I WAS ACCEPTED, IT WAS ONE OF THE BEST DAYS OF MY LIFE. I'M VERY HAPPY AND I'VE MADE SO MANY FRIENDS. IT'S BEEN A FANTASTIC EXPERIENCE. TRANSFERRING WAS DEFINITELY THE RIGHT DECISION FOR ME. "*

**JULIA SCHALL**

Human Services & Restorative Justice



# SUPPORTING YOUR SUCCESS

## ADMISSIONS TEAM

As a transfer student, you'll be paired with a staff member from Admissions who can help with your transition to Penn College. From transcript reminders to housing recommendations, we have you covered and can answer any questions you have.

APPLICATION  
TO FIRST YEAR

## MICHAEL J. HUDOCK, SR. CENTER FOR ACADEMIC EXCELLENCE

Here's where you'll find front-line support for academic and personal challenges. Connect with a dedicated team who will work in tandem with faculty to keep you moving full speed ahead.

FIRST YEAR TO  
GRADUATION

## TUTORING SERVICES

Free tutoring services, including math and writing, are available on campus and online. Drop in during regular hours or schedule a one-on-one appointment.

## DISABILITY AND ACCESS RESOURCES

We believe everyone deserves a level playing field. Disability and Access Resources can help you take advantage of accommodations that will put you on the path to a rewarding future.

## COUNSELING SERVICES

To reach their full potential, Wildcats must prioritize physical and mental health. Our team of experienced counselors is dedicated to promoting wellness strategies that empower you to achieve your absolute best.

## CENTER FOR CAREER DESIGN

Helping you land the career of your dreams is our goal from day one. And it doesn't stop after graduation. Stop in before your first job and beyond for everything from free business cards and mock interviews to resume reviews and employer networking events.

FIRST YEAR TO  
GRADUATION  
AND BEYOND



“

AFTER DOING MY RESEARCH AND SEEING ALL OF THE OPPORTUNITIES THAT PENN COLLEGE OFFERS, I DECIDED TO TRANSFER TO PURSUE MY BACHELOR'S DEGREE. NOW THAT I'M HERE, I'M KEEPING BUSY AS A STUDENT LEADER. I'M A RESIDENT ASSISTANT, A PEER MENTOR, AND A SENATOR FOR STUDENT GOVERNMENT. I'M FINDING A LOT TO KEEP MYSELF BUSY ON AND OFF CAMPUS. THERE ARE A LOT OF GREAT RESTAURANTS AND I ALSO LIKE RUNNING ON THE RIVERWALK THAT'S CLOSE BY.”

ELVIS GARCIA

Heating, Ventilation & Air Conditioning  
Engineering Technology







# GET INVOLVED

## One of the best ways to meet

fresh faces is by joining clubs and organizations. With 70+ groups on campus, there's something for everyone. Don't see something you love? Connect with like-minded friends and start your own.



## DIVE INTO PC3

Don't wait to make memories. Kick off your semester with PC3—three weeks full of activities like casino night, lawn games, and goat yoga.

## NCAA DIVISION III ATHLETICS

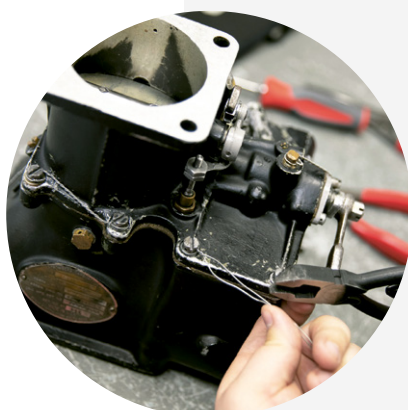
From basketball and soccer to cross country and tennis, our lineup of NCAA Division III programs offers even more ways to connect outside of the classroom. If intramurals are more your speed, we've got those too.



**" I WENT TO LOTS OF PC3 ACTIVITIES. I'D GO TO THE EVENTS THAT YOU THINK YOU HAVE SOME INTEREST IN AND YOU'LL MEET PEOPLE WITH THE SAME INTERESTS AS YOU. I DON'T KNOW ANY OTHER SCHOOL THAT OFFERS SO MUCH DURING THE FIRST THREE WEEKS. IT'S COOL TO GO TO SOMETHING AFTER SCHOOL AND JUST RELAX AND MEET PEOPLE AND BE YOURSELF. "**

**CHEON STEELE**

Aviation Maintenance Technology



MEET  
CHEON

**At Penn College, we believe that education is an**

investment in your future. And like all meaningful experiences, you want to know that everything you put in will pay off in the end. At Penn College, it will.

Here, you'll find a lineup of programs designed to answer industry needs plus training in cutting-edge labs. When you consider our 97.6% graduate-placement rate, there's no doubt that your return on investment is rock solid.

## TRANSFER STUDENT SCHOLARSHIPS

Five \$2,500 annual awards are available for high-achieving transfer students who've earned an associate's degree and are pursuing a bachelor's degree at Penn College.



## ARMY ROTC

Join the nation's premier leadership program and earn a commission as a U.S. Army officer. The Army ROTC program at Penn College offers competitive scholarships for tuition, room and board, and other expenses.

## UNIQUE SCHOLARSHIPS 350+

**\$3.6 MILLION**  
AWARDS IN 2024-25



**" I ORIGINALLY ATTENDED ANOTHER COLLEGE, BUT MY HEART WASN'T IN THE PROGRAM OR THE SCHOOL. THIS WAS DURING THE PANDEMIC SO I WAS MISSING THAT SENSE OF CONNECTION. PLUS, IT WAS A COMMUTER SCHOOL SO THERE WERE NO CLUBS OR ORGANIZATIONS. I DECIDED TO TAKE SOME TIME OFF AND WORK AS A NURSING ASSISTANT. I REALLY FELL IN LOVE WITH THAT AND MY COWORKERS ENCOURAGED ME TO GO BACK TO COLLEGE FOR NURSING. THAT'S WHEN I FOUND PENN COLLEGE. I'M GETTING A HANDS-ON EDUCATION PLUS, I'M INVOLVED WITH STUDENT GOVERNMENT AND THE STUDENT NURSES' ASSOCIATION AND HAVE MET A LOT OF REALLY GREAT PEOPLE. "**

**ALEXIS MANHART**  
Nursing

**RETURN ON  
INVESTMENT**





# PATHWAYS TO PENN COLLEGE

## No two transfers are alike. Some students crave

a more hands-on approach to learning. Others wish to complete a bachelor's degree that isn't offered at their previous school. And others want to build on their associate's degree as an online student while beginning their career. Whatever your reason for transferring to Penn College, you'll find a pathway that will take you where you want to go.

## TRANSFER AGREEMENTS

Penn College has a number of transfer agreements with other colleges. These are designed to help simplify your transition. They provide a clear set of guidelines for coursework to take at your current institution and outline which courses you'll have to take when you get here. Check them out at [pct.edu/pathway-agreements](https://pct.edu/pathway-agreements).

## TRANSFER EVALUATIONS

Through our evaluation process, transfer students are awarded credit for previously completed coursework that aligns with requirements of their program. In some cases, students who've already earned a degree may receive automatic credit for general education courses.

## COMPLETION DEGREES

In addition to the transfer agreements, we offer several completion programs to help accelerate a four-year degree if you've already earned an associate's or a substantial number of college credits.

### ONLINE

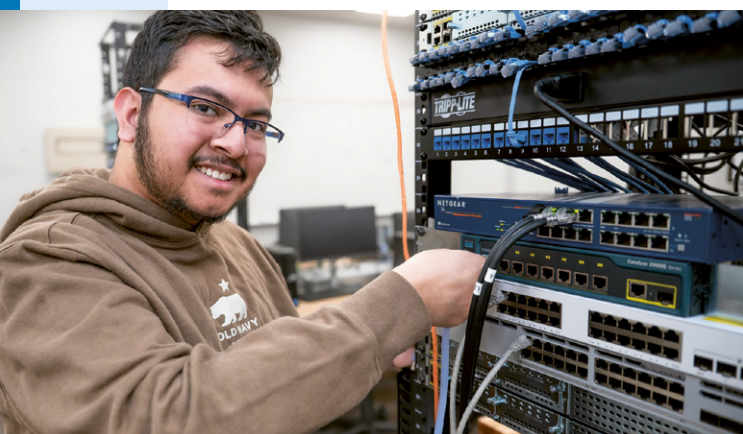
- ◇ Dental Hygiene
- ◇ Healthcare Leadership & Administration
- ◇ Nursing, RN to B.S.N.

### ON CAMPUS

- ◇ Applied Technology Studies
- ◇ Building Automation Engineering Technology
- ◇ Residential Construction Technology & Management

### ONLINE OR ON CAMPUS

- ◇ Applied Management
- ◇ Automotive Technology Management



**" I WENT TO SEE A BUNCH OF DIFFERENT COLLEGES BEFORE MAKING THE DECISION TO TRANSFER. THE EQUIPMENT I SAW AT PENN COLLEGE WAS UP-TO-DATE AND JUST LIKE WHAT I SAW AT THE COMPANIES WHERE I WAS INTERNING. AND AT PENN COLLEGE, YOU GET WHAT YOU PAY FOR. WE DON'T HAVE LECTURES ALL OF THE TIME. HERE, YOU GET TO GET YOUR HANDS DIRTY AND LEARN TO OPERATE THE EQUIPMENT. WITH WHAT I'M LEARNING, I'M ALMOST GUARANTEED A JOB AFTER I GRADUATE. THAT'S PROBABLY THE BEST THING ABOUT PENN COLLEGE. I'LL GET TO START MY CAREER AS SOON AS I GRADUATE. "**

**DIWASH DAHAL**

Network Administration  
& Engineering Technology



Transferring to Penn College is *simple*.  
Here's what you can expect.

THE ADMISSIONS PROCESS

Follow our three-step process.

1

Complete the Application

Apply for free today at [pct.edu/apply](https://pct.edu/apply).

2

Submit Your Materials

Request transcripts from each college you attended along with your high school transcript if you haven't earned a degree. If you're still enrolled at another college or university, send us a partial, unofficial transcript showing your in-progress coursework now. We'll use this information to complete a transfer credit evaluation for all aligning courses.

Have your schools send transcripts directly to [admissions@pct.edu](mailto:admissions@pct.edu).

Materials can also be sent through an electronic sending service like Parchment, eSCRIPTS, or National Student Clearinghouse.

• • • • GET ACCEPTED • • • •

3

Meet Placement Requirements

Our programs are rigorous, which is why you'll need to show that you're up for the challenge. Many transfer students meet placement requirements through completed courses. Others take a math skills test to determine their best path forward. If required, it's best to take your placement test as early as possible to allow time for leveling up with developmental math if needed.

Learn more at  
[pct.edu/placement](https://pct.edu/placement)

TIMELINES

FALL SEMESTER ENROLLMENT

|       |                         |                          |
|-------|-------------------------|--------------------------|
| AUG 1 | Transfer application    | opens for following year |
| OCT 1 | FAFSA                   | opens for following year |
| DEC 1 | Scholarship application | opens for following year |
| FEB 1 | Transfer application    | priority deadline*       |
| MAR 1 | FAFSA                   | priority deadline        |
|       | Scholarship application | awarding begins          |
| AUG 1 | Transfer application    | recommended deadline     |

SPRING SEMESTER ENROLLMENT

|       |                         |                          |
|-------|-------------------------|--------------------------|
| AUG 1 | Transfer application    | opens for following year |
| OCT 1 | Transfer application    | priority deadline*       |
|       | Scholarship application | final deadline           |
| JAN 1 | Transfer application    | recommended deadline     |

\*Programs often reach capacity early. Completing our three-step application process by the priority deadline will increase your chances of securing a spot in your desired program. When capacity is reached, students will be added to a waitlist.

Ready to make your move?

Get all the details at

[pct.edu/transfer](https://pct.edu/transfer)

WHAT'S NEXT?



## ADMISSIONS OFFICE

Davie Jane Gilmour Center, Room 1068  
Pennsylvania College of Technology  
One College Avenue  
Williamsport, PA 17701-5799 USA

admissions@pct.edu  
+1.800.367.9222 or +1.570.327.4761  
@penncollege

Pennsylvania College of Technology is an accredited institution and a member of the Middle States Commission on Higher Education (MSCHE or the Commission) [www.msche.org](http://www.msche.org). Pennsylvania College of Technology's accreditation status is Accreditation Reaffirmed. The Commission's most recent action on the institution's accreditation status on June 23, 2022, was to reaffirm accreditation.

MSCHE is recognized by the U.S. Secretary of Education to conduct accreditation and pre-accreditation (candidate status) activities for institutions of higher education including distance, correspondence education, and direct assessment programs offered at those institutions. The Commission's geographic area of accrediting activities is throughout the United States.



**Pennsylvania  
College of Technology**

A Penn State Affiliate

Penn College operates on a nondiscriminatory basis.  
All data from 2024–25 sources.

