

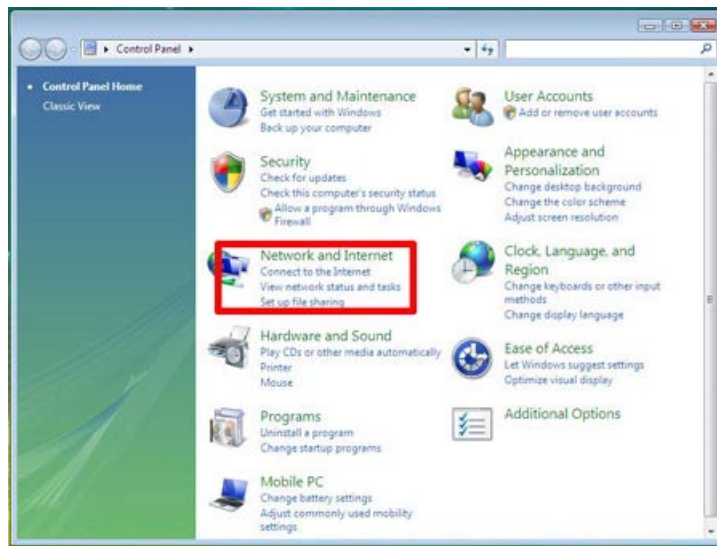
INFORMATION TECHNOLOGY SERVICES

Configuring Secure Wireless

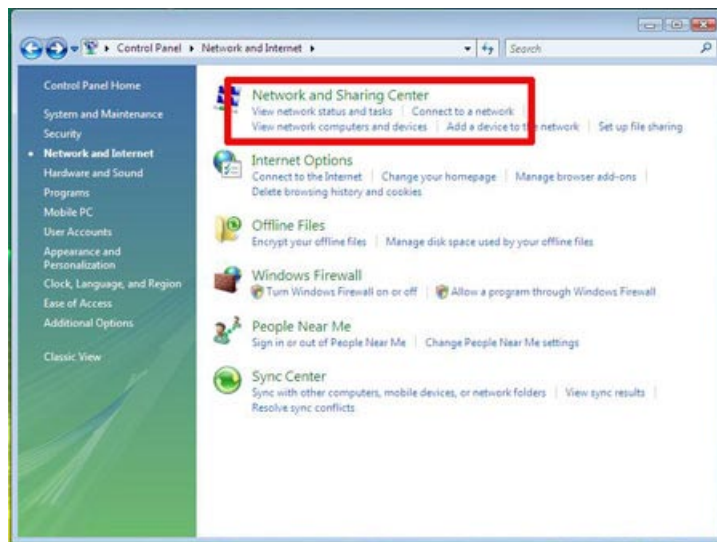
Microsoft Windows Vista

NOTE: If your computer uses a program other than Vista's wireless utility to manage wireless connections, you may receive an alert to that affect; the third-party program must be disabled before you can configure your computer to use the secure Wildcat Wireless network. If you need assistance in disabling the program, contact the ITS Help Desk.

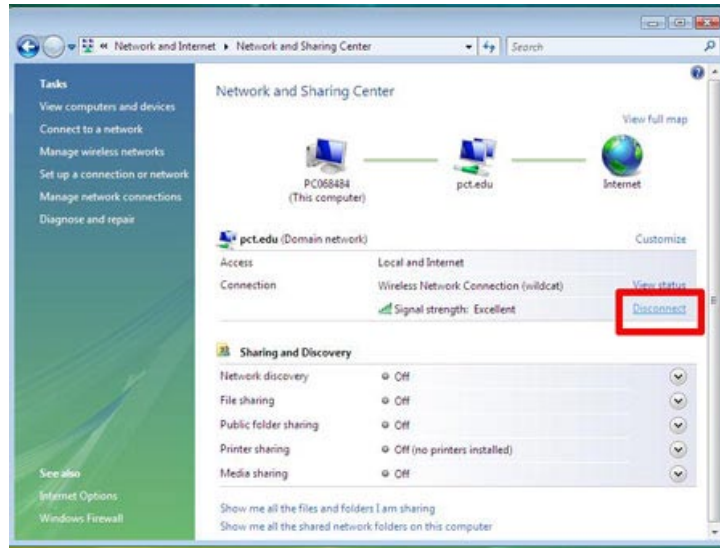
1. From your Start menu open the **Control Panel**.
2. Click **Network and Internet**.



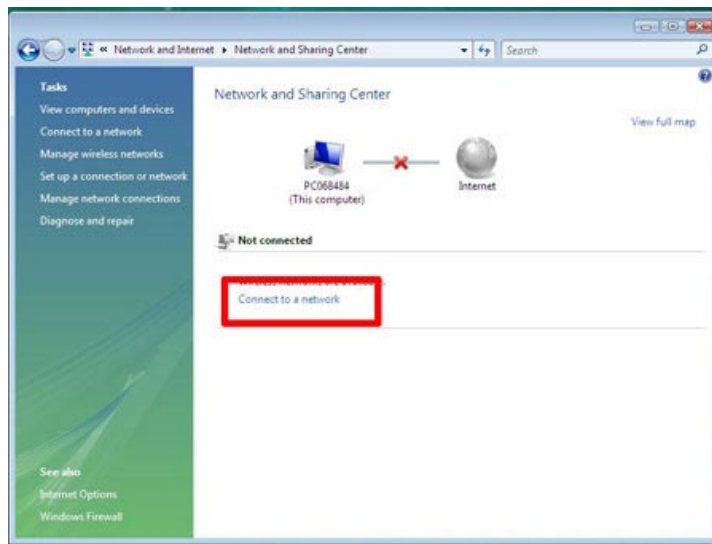
3. Click **Network and Sharing Center**.



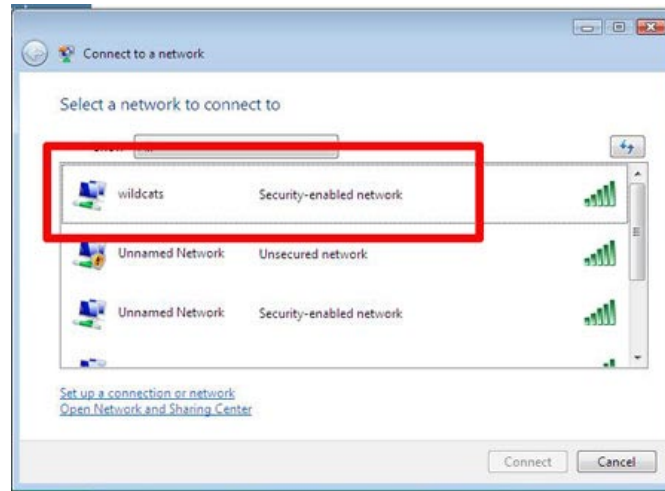
4. If you are connected to a wireless network, click **Disconnect**.



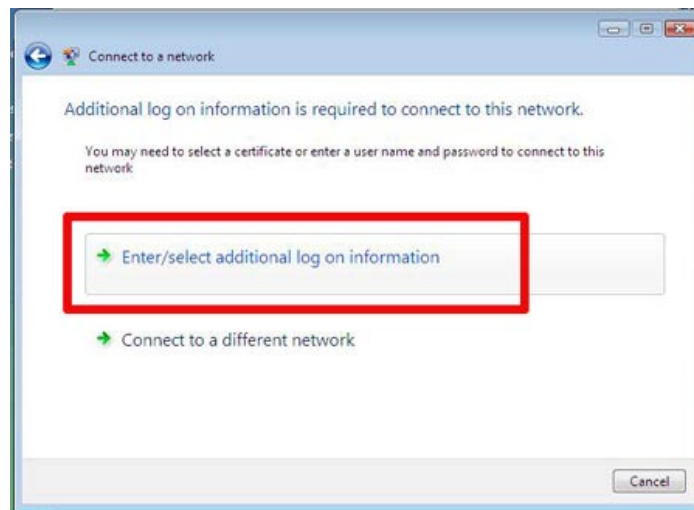
5. Click **Connect to a network**.



6. Choose **wildcats**, and then click **Connect**.



7. Click **Enter/select additional log on information**.

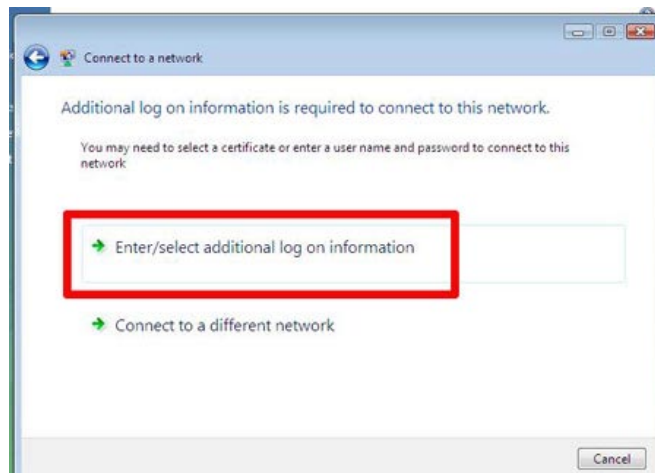


8. Enter the following information as shown:
 - a. Network User Name: **<your logon name>**
 - b. Network Password: **<your password>**
 - c. Network Logon domain: **PCT**



9. Click **OK**.

10. Click **Enter/Select additional log on information**.



11. When prompted to validate the Server Certificate, click **OK**.



12. Repeat steps 11 and 12 to accept all certificates.

13. Keep the default checkmarks in **Save this network** and **Start this connection automatically** and click **Close**.

